

niagarahealth

Extraordinary Caring. Every Person. Every Time.

Partnering Together for the Future South Niagara Hospital

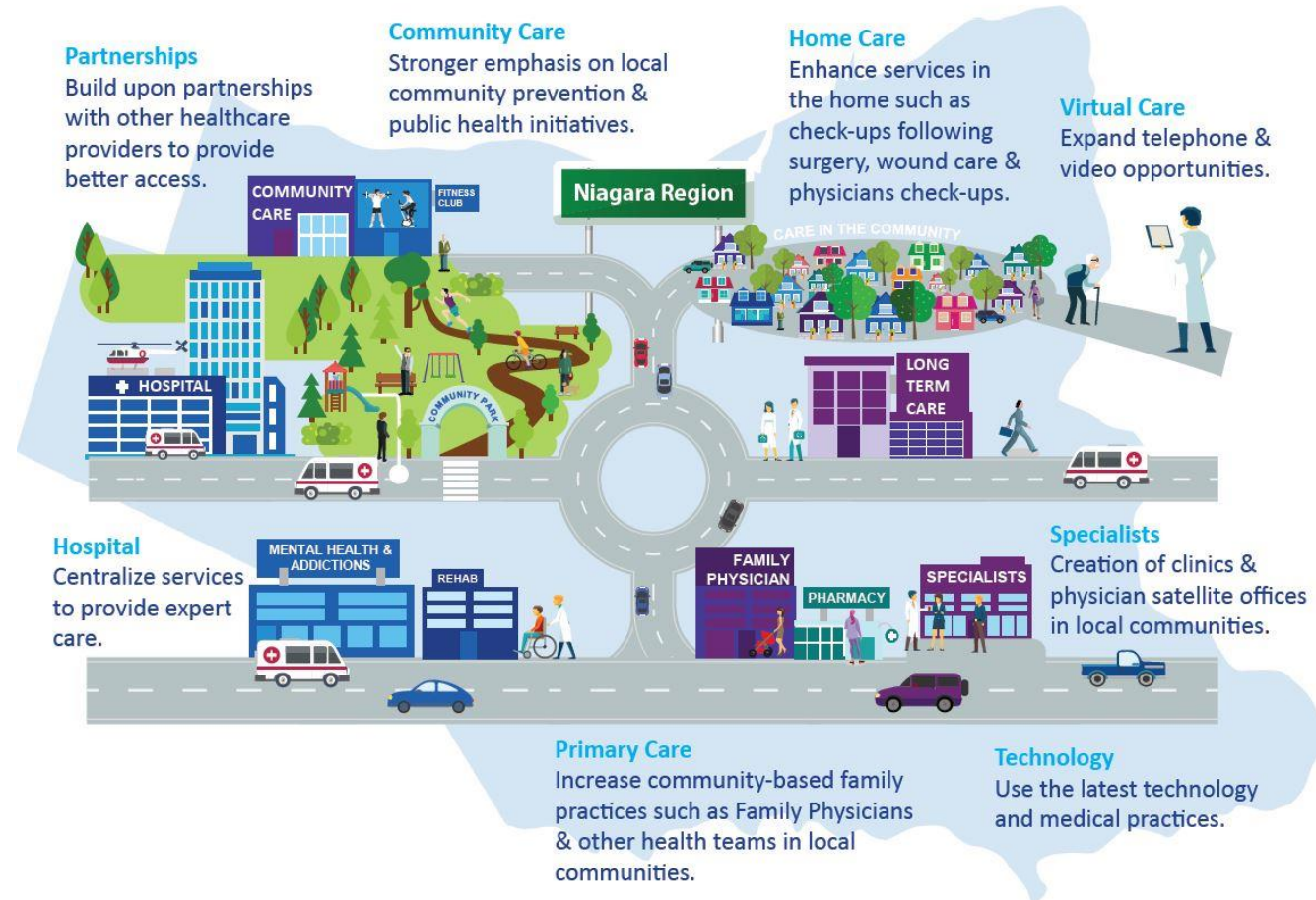
Niagara Region Corporate Services Committee
April 14, 2021





Building a Healthier Niagara, Together.

Our vision calls for Niagara Health to centralize expert care found in hospitals and **expand access** to local healthcare services in communities across Niagara.



© 2019 KPMG International Cooperative ("KPMG International"), a Swiss entity. Member firms of the KPMG network of independent firms are affiliated with KPMG International. KPMG International provides no services to clients. No member firm has any authority to obligate or bind KPMG International or any other member firm vis-à-vis third parties, nor does KPMG International have any such authority to obligate or bind any member firm. All rights reserved.

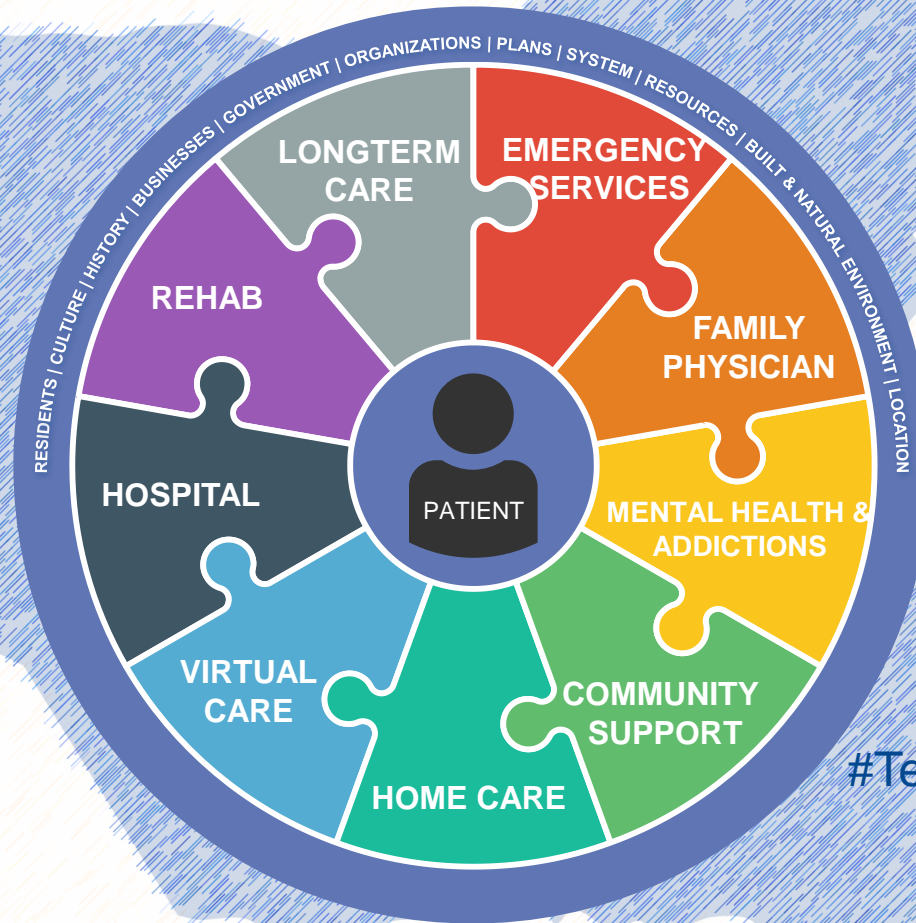
2





What does a Healthier Niagara look like?

Patients receive all their care, including family physicians, hospital services, mental health & addictions services, long-term care, and home and community care from ONE COORDINATED TEAM.

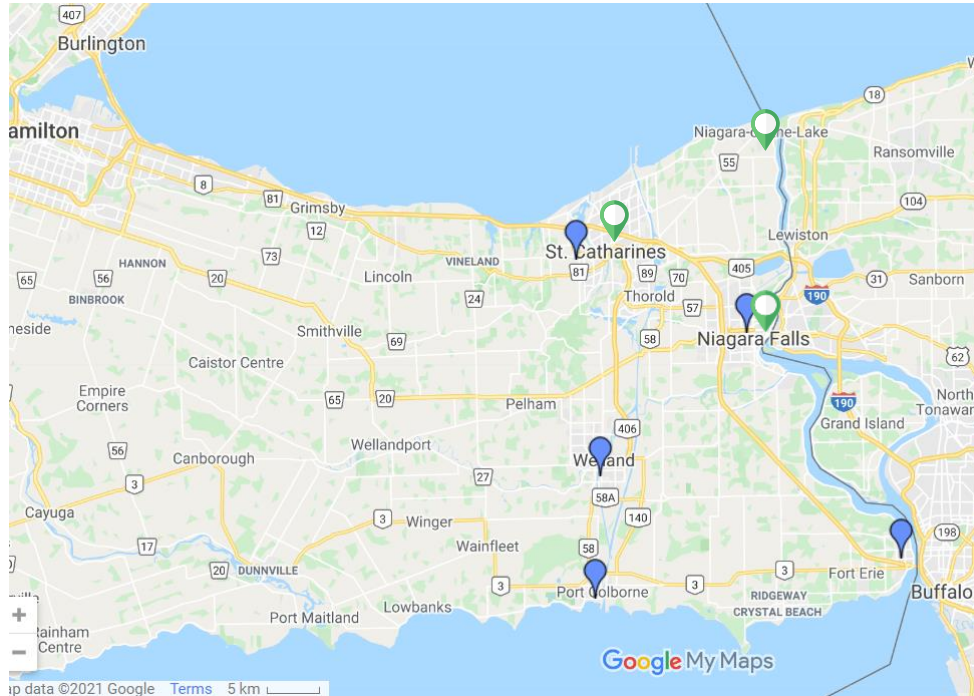


#TeamNiagara





Current Service Model



Hospital Site



Community-based service

Niagara Health (NH) currently has five (5) sites:

- Douglas Memorial
- Greater Niagara General
- Port Colborne
- St. Catharines
- Welland

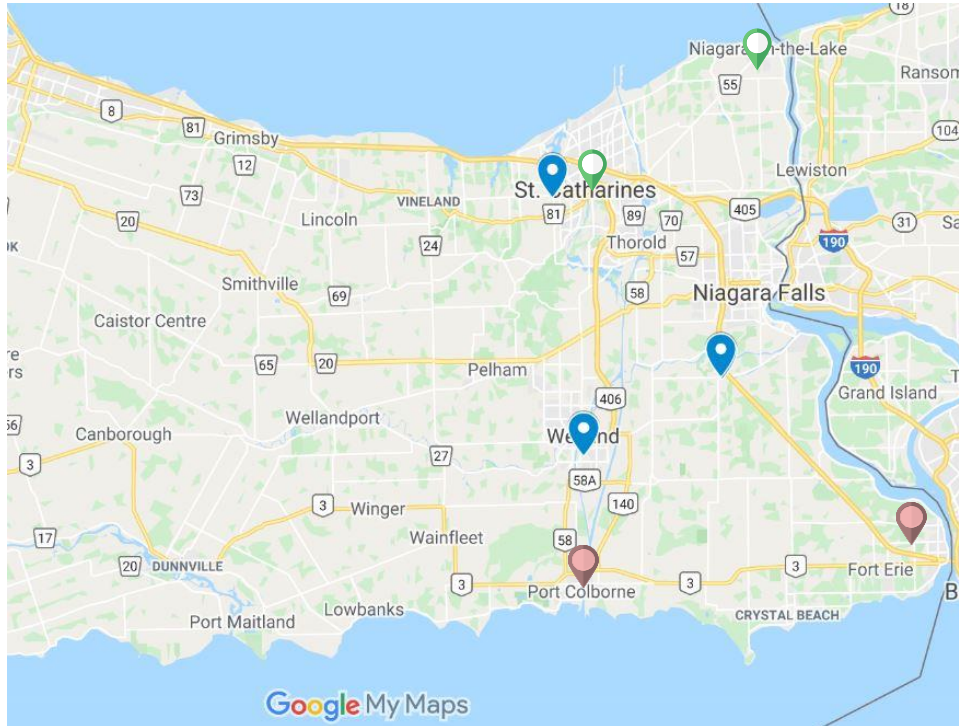
NH has a growing network of community-based and virtual services.

- Welland Avenue, St. Catharines (CMHA Partnership: Mental Health & Addictions program)
- Niagara Falls Satellite Dialysis Site
- Nurse Practitioner Walk-in Clinic, Niagara-on-the-Lake





Future Service Model (2026/27)



Hospital Site



Community-based service



Future community-based service

NH future vision calls for three (3) sites:

- St. Catharines
- South Niagara
- Welland
- Welland Avenue, St. Catharines (CMHA partnership)
- Nurse Practitioner Walk-in Clinic, Niagara-on-the-Lake
- Future community-based services, Fort Erie & Port Colborne





Future Site Model (2026/27)

ST. CATHARINES SITE



Emergency Medicine
Critical Care
General Surgery
Ambulatory Care
Diagnostic Imaging &
Laboratory
Outpatient Clinics
Children's Health
Administration

CENTRES OF EXCELLENCE

Women & Babies
Cancer
Cardiac
Kidney
Mental Health

SOUTH NIAGARA SITE



Emergency Medicine
Critical Care
General Surgery
Ambulatory Care
Mental Health & Addictions
Diagnostic Imaging &
Laboratory
Outpatient Clinics
Kidney Care
Joint Care
Indigenous Healing
Administration

CENTRES OF EXCELLENCE

Complex Care
Geriatric Psychiatry
Seniors' Wellness
Stroke

WELLAND SITE



24/7 Emergency Services
8-10 Observation Beds
Ambulatory Care
Mental Health & Addictions
*Diagnostic Imaging &
Laboratory
Outpatient Clinics
Administrative Hub
Long Term Care Centre

CENTRE OF EXCELLENCE

Eye Care

*Limited services

6





South Niagara Site

The artist rendering is conceptual and for illustrative purposes only. It is subject to change.

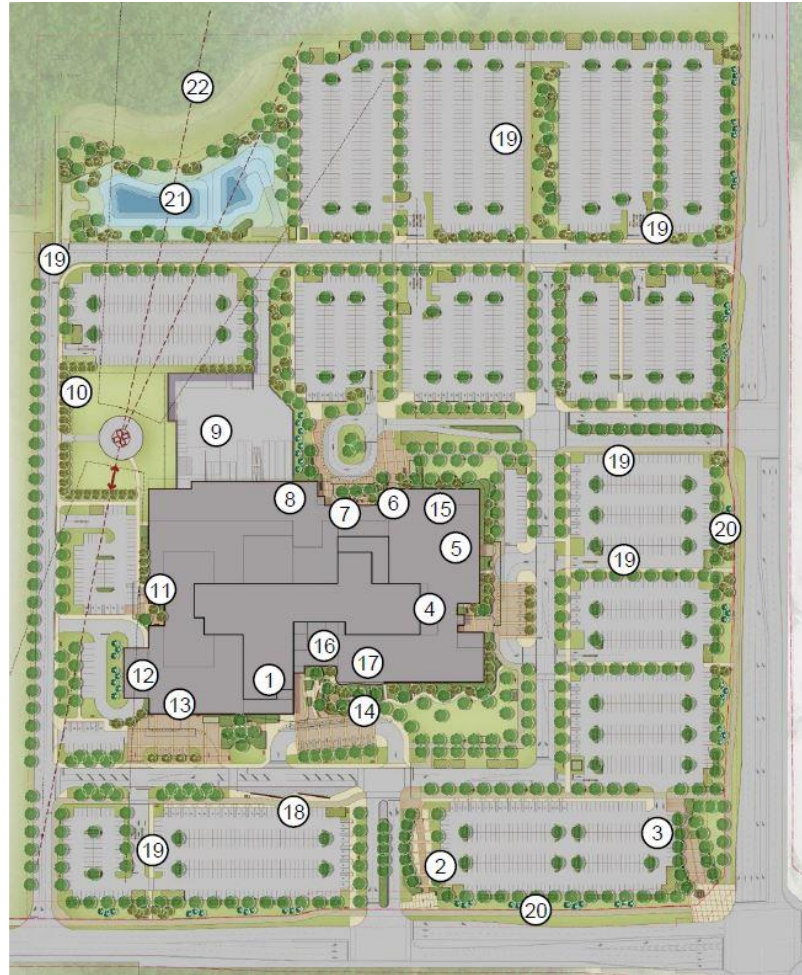




South Niagara Site

Illustrative Site Plan

- ① MAIN ENTRANCE COURTYARD
- ② COMMUNITY PLAZA
- ③ GATEWAY PLAZA
- ④ AMBULATORY CARE ENTRANCE
- ⑤ DIALYSIS ENTRANCE
- ⑥ STAFF ENTRANCE
- ⑦ CAFETERIA COURTYARD
- ⑧ DI ENTRANCE COURTYARD
- ⑨ LOADING DOCKS
- ⑩ HELIPAD
- ⑪ PATIENT TRANSFER ENTRANCE COURTYARD
- ⑫ AMBULANCE GARAGE
- ⑬ EMERGENCY ENTRANCE COURTYARD
- ⑭ INDIGENOUS HEALING GARDEN
- ⑮ MENTAL HEALTH TERRACE
- ⑯ AUDITORIUM TERRACE
- ⑰ SPIRITUAL CARE TERRACE
- ⑱ TRANSIT STOP
- ⑲ PEDESTRIAN/CYCLIST NETWORK
- ⑳ VEGETATED BUFFER
- ㉑ STORM WATER MANAGEMENT POND
- ㉒ NATURAL AREA



This site plan is conceptual and for illustrative purposes only. It is subject to change.





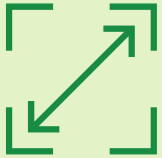
South Niagara Site Overview



469 Beds

30 Critical Care Beds
170 Complex Care Beds
269 Medical Surgical Beds

8 Operating Suites
42 Hemodialysis Stations



Approximately 1.2 Million
Square Feet



Designed with a seniors' focus embedded into all aspects of care.



Working toward being the first WELL® certified healthcare facility in Canada. WELL® certification will improve the work-life experience and promote well-being for staff and physicians who will travel all across Niagara, and overall improve the experience for all who use the building.





South Niagara Site: Programs & Services

Emergency Medicine Program

91,000 Visits

24/7 Emergency Department
Trauma Care
Geriatric Crisis Services

Critical Care Program

30 Beds

Intensive Care Unit
Cardiac Monitoring

Medicine/Surgical Program

269 Beds

Inpatient Care
Cardiac Program
Inpatient Kidney Care

Mental Health & Addictions Program

20,000 Visits

Adult, Children and Adolescent day services

Diagnostic Services

179,000 Tests

X-ray
Ultrasound
CT
MRI
Ontario Breast Screening Program
Cardiac Ultrasound (Echocardiography)
Interventional Radiology (IR)

Ambulatory Care

94,000 Visits

Medicine Outpatient Clinics
Surgical Outpatient Clinics
Assessment Clinic

Surgical Program

8 Operating Suites

Chronic Disease Management

7,900 Visits

Outpatient Rehab
Diabetes Education

Kidney Care

42 Dialysis Stations

Laboratory

3,700,000 Tests

Cardio-Respiratory

24,000 Visits

Cardio-Respiratory Clinics
Stress Testing
Electrocardiography (ECG)

Complex Care Centre of Excellence

NEW! 170 Beds

Inpatient Care
Specialized Complex Care*

Wellness in Aging Centre of Excellence

NEW! 7,500 Visits

Seniors Wellness Services
Seniors Assessment Services

Pharmacy

8,700,000 Units

Stroke Centre of Excellence

NEW! Excellence

Indigenous Healing Centre

NEW!

Geriatric/Geriatric Psychiatry Centre of Excellence

NEW!

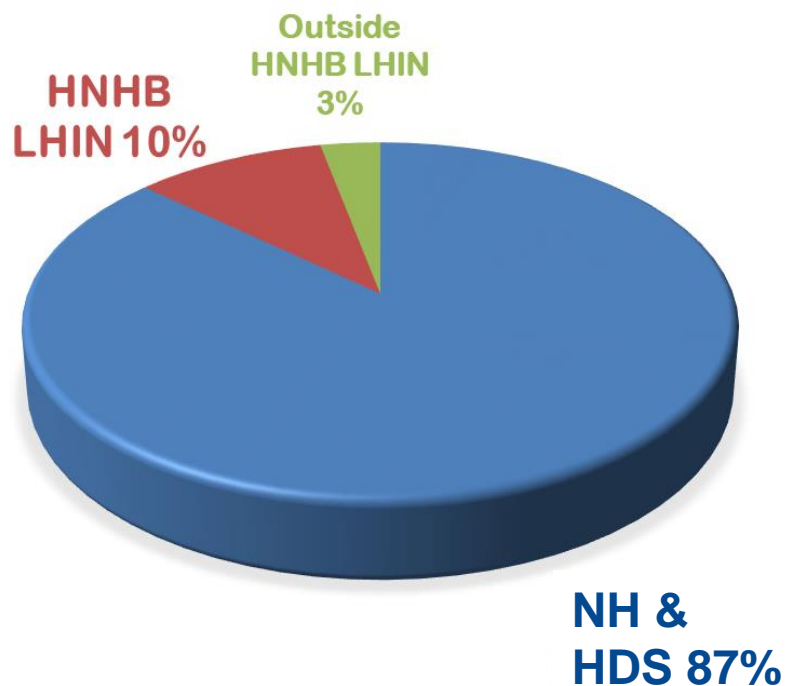
LHIN-wide Joint

Other Resources

Spiritual Care
Cafeteria
Auditorium
Education/ Academic Centre
Retail Space
Administrative Space
NH Foundation



Where Niagara Residents Go for Care



- **86.7% Come to NH**

- Over 90% come for Emergency/UCC, Mental Health and Renal Dialysis Programs
- 78% for acute inpatient, day surgery and 81% for endoscopy services
- 70% for cardiac catheterization & 72% outpatient oncology

- **97% stay in Niagara for Complex Care**

- 66% at NH & 31% at Hotel Dieu Shaver (HDS)
- In 2026, Complex Care beds will only be located at South Niagara Site & Hotel Dieu Shaver



South Niagara Site: Primary Users



EXPERT CARE CLOSE TO HOME

Serve **231,663 residents**

Over 50% of Niagara's population from:
Niagara Falls, Fort Erie, Port Colborne, Wainfleet,
Welland & Pelham.

Centre of Excellence programs serve **447,888 residents**





South Niagara Site: A Regional Hospital



**7,400 More
Senior
Wellness Visits**



**77% more capacity for
Mental Health & Addictions
Visits**



**Building a Healthier Niagara
TOGETHER.**



**156 More
Beds**



**20,000 More
Emergency Visits**



**12 More
Hemodialysis
Stations**





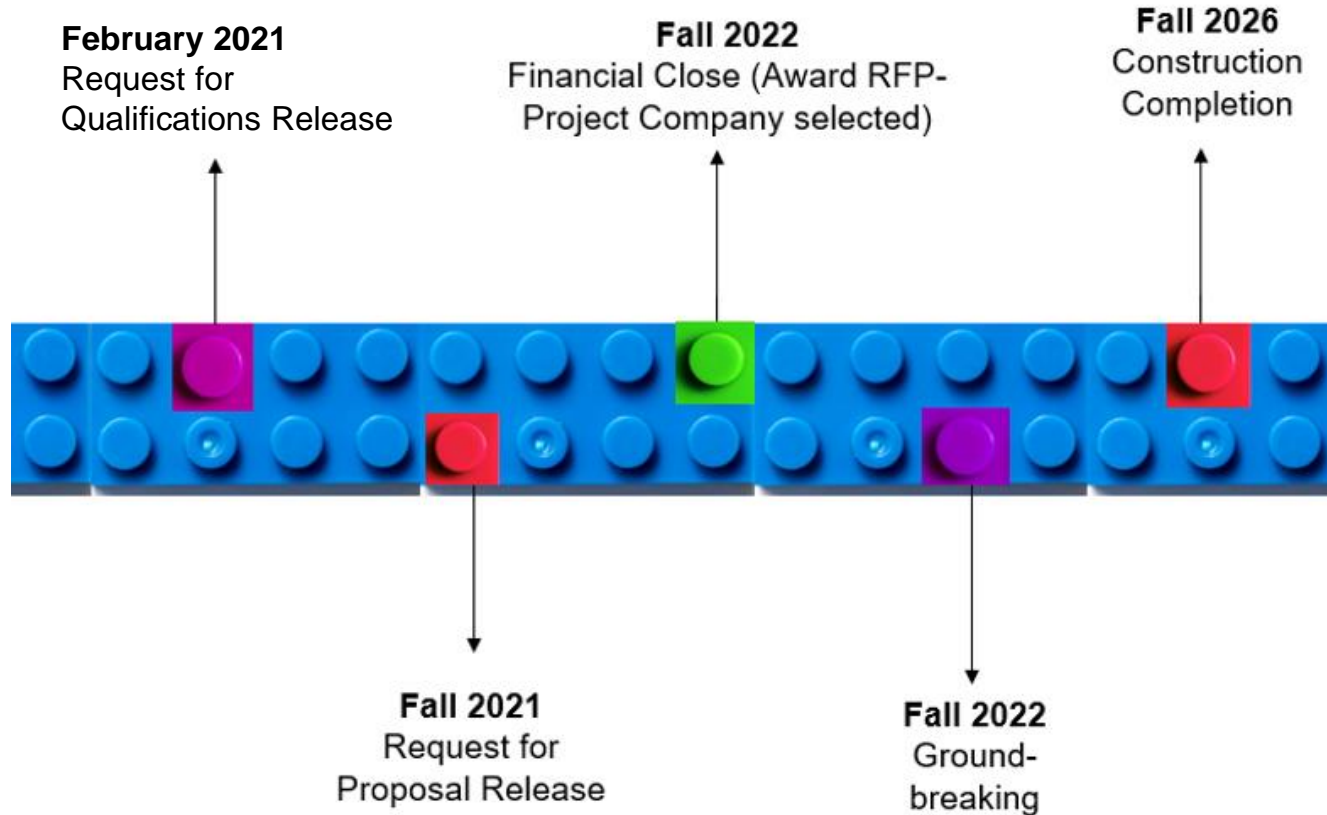
South Niagara Site: Regional Benefits

- Larger than the St. Catharines Site, serving a larger population with expanded services
- Reduce wait times
- Accommodate more senior visits
- Additional beds for the region
- Facility that supports older persons
- Provide a better overall patient experience
- Multi-year economic spin-off benefits boosting employment and community growth
- Ability to attract and retain top healthcare professionals
- Have adequate space and infrastructure to accommodate new and emerging health care technology and current standards of care
- Leading innovation
- State-of-the-art infection prevention control measures





South Niagara Site Upcoming Milestones





South Niagara Site: What is Local Share?

The local share is the portion of funding for which a hospital is responsible. The Ministry of Health's capital cost-sharing policy for hospital projects does not cover 100 per cent of all costs incurred, not all elements of a project are eligible for ministry cost-sharing.

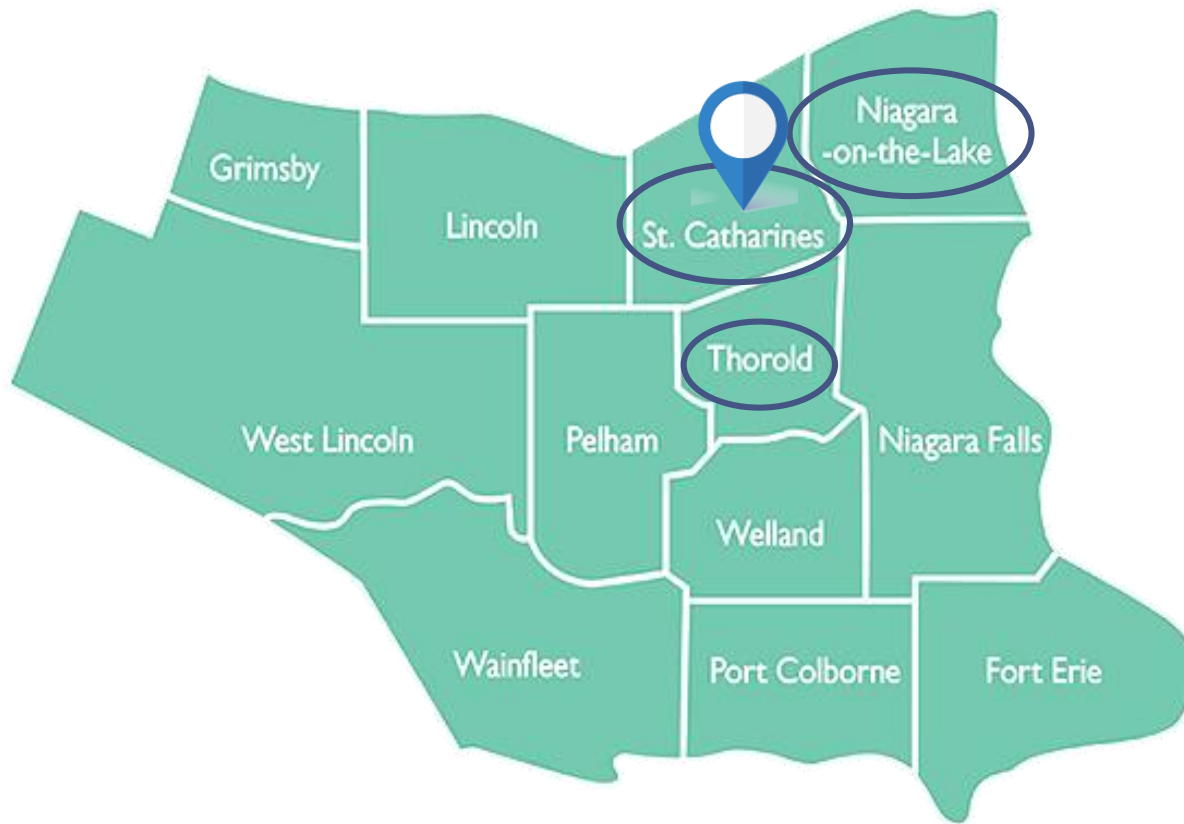
Hospitals are responsible for:

- 10% of the eligible construction costs and associated ancillary costs;
- 100% of the costs associated with the purchase of new and replacement furniture, fixtures and equipment.



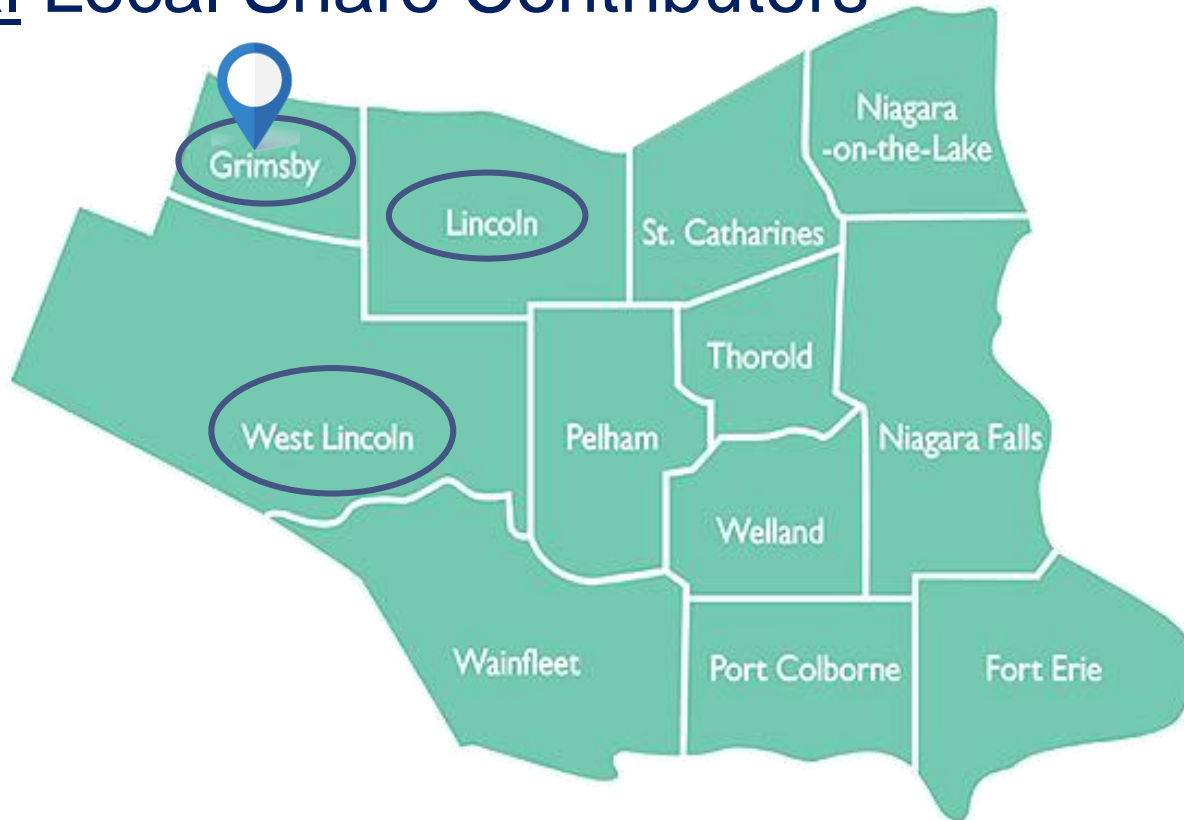


Niagara Health, St. Catharines Site: Municipal Local Share Contributors





Hamilton Health Sciences, West Lincoln Hospital: Municipal Local Share Contributors





Niagara Health, South Niagara Site: Municipal Local Share Anticipated Contributors





Regional Local Share: Commitments

Niagara Health, St. Catharines Site

\$750+ million

- \$116 million total local share
- \$21 million regional local share contribution (Based on square footage for new regional services – Mental Health, Cardiac, Cancer)

Hamilton Health Sciences - West Lincoln Memorial Hospital

\$250+ million

- \$60 million total local share
- \$12.6 million regional local share commitment (21% of total local share)

Niagara Health, South Niagara Site

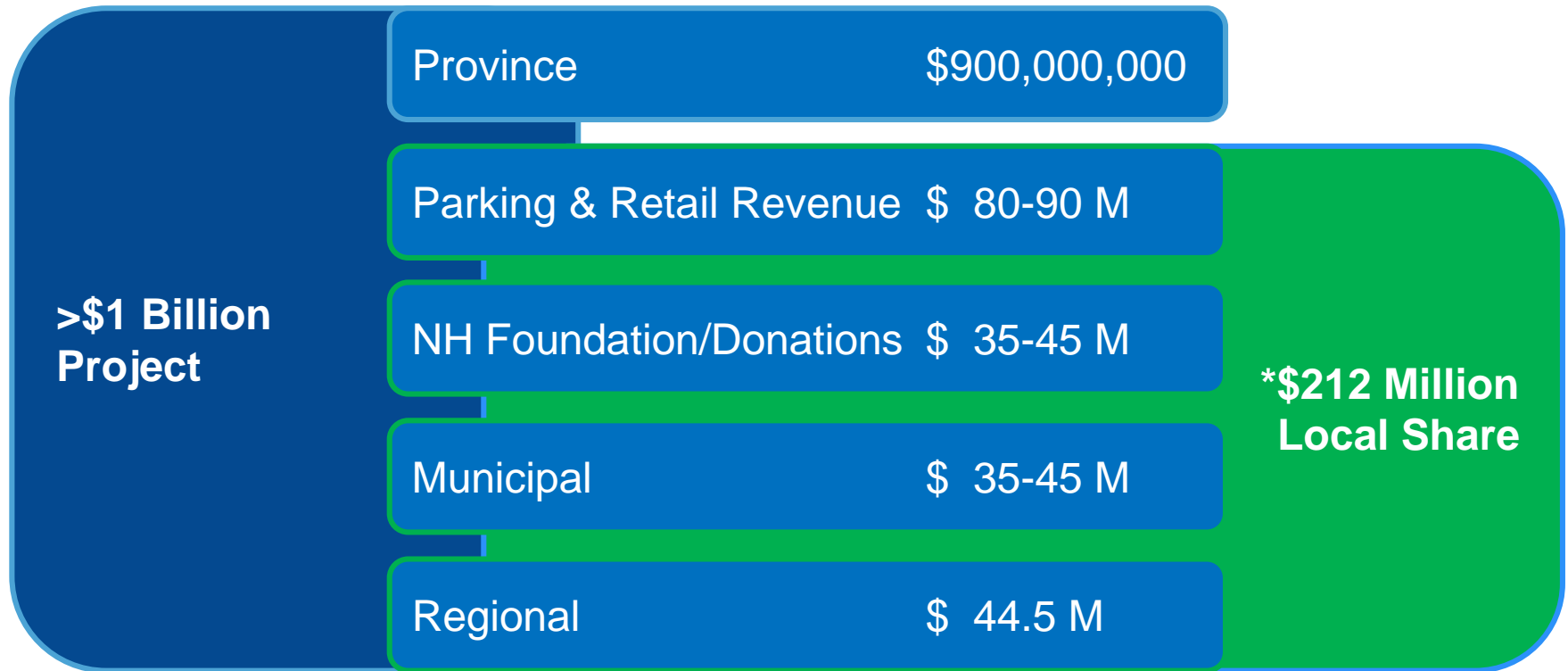
\$1+ billion

- \$212 million total local share
- \$44.5 million regional local share commitment (21% of total local share)





South Niagara Site: Local Share



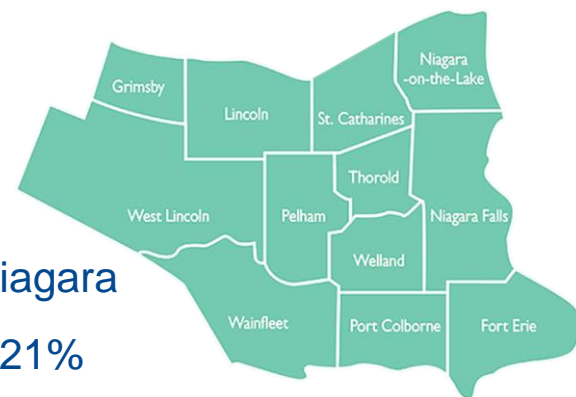
*The Cost of Financing and Private-Public-Partnership (P3) Costs are excluded from the calculation of the Local Share at this time.





Why invest \$ 44.5 million?

- Regional hospital serving over 50% of Niagara's population
- Providing additional beds and expanded services for all of Niagara
- Supported Hamilton Health Sciences – West Lincoln Site at 21%
- Square footage for regional services total over 50% of hospital
- South Niagara Site offers new regional programs:
 - Regional Complex Care beds
 - Regional Stroke Centre
 - Regional Wellness in Aging Centre
 - Regional Geriatric and Geriatric Psychiatry Centre
 - Regional Joint program
 - Regional Indigenous Healing Centre
- Multi-year economic spin-off benefits
- Improve the health and well-being of Niagara residents





Questions?

