



 ONE MILLION SQUARE FEET OF CARE

# Our New Health-Care Complex and Walker Family Cancer Centre



## New Hospital Town Hall

# Agenda

## ONE MILLION SQUARE FEET OF CARE

- Welcome
- Construction update
- Department locations
- Timeline
- What are we doing to get ready?
- How can I get involved?
- Town Hall Schedule
- Million square feet of care

# 264 DAYS UNTIL CONSTRUCTION IS COMPLETE!

- On budget, on schedule on scope
- Construction over 85% complete
- Currently 600 workers on the site
- Over 2 million man hours to date
- 85% of the skilled trades are from the local community
- Construction to be completed by November 26, 2012



NHS Healthcare Complex and Walker Family Cancer Centre  
Aerial view looking Northwest - January 27 2012

*Opening to provide patient care  
Spring 2013*

# Scope

- 980,800 sq.ft. acute care facility for St. Catharines, Thorold, Niagara-on-the-Lake and surrounding communities
  - Replaces aging Ontario Street and St. Catharines General sites
- Will act as hub of regional dialysis services, complemented by services in Welland and being planned for in Niagara Falls
- New regional services
  - Walker Family Cancer Centre
  - Heart Investigation Unit
  - Longer-Term Mental Health Centre



# World Class Design

- Public and staff engagement resulted in guiding design principles
- Local knowledge of clinicians + global expertise of architects = Building that is focused on patient experience and outcome
- Representatives from all 38 departments and specialty areas contributed to the overall development



# Level 0

Food Services

Bio-Medical

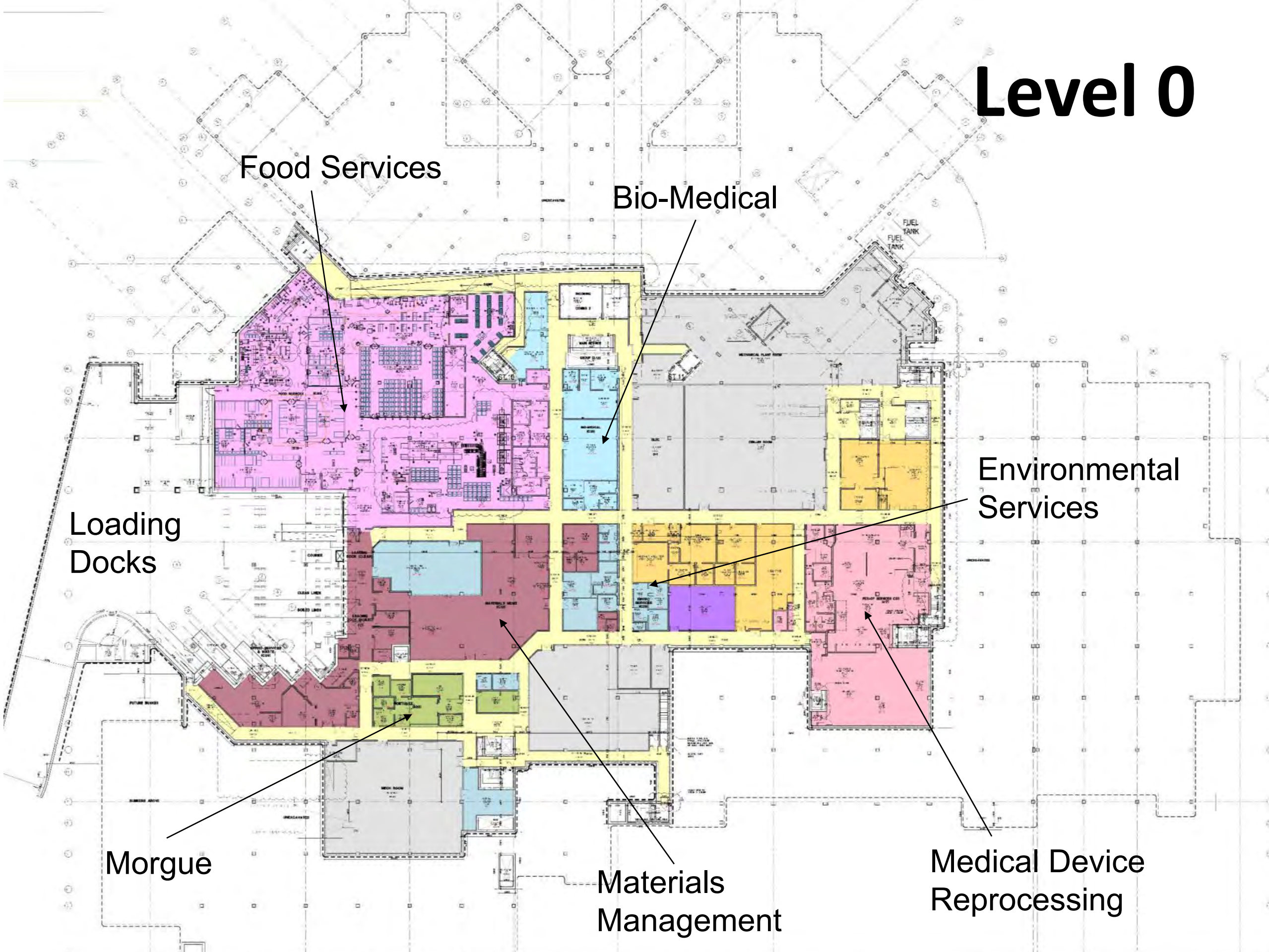
Environmental Services

Loading Docks

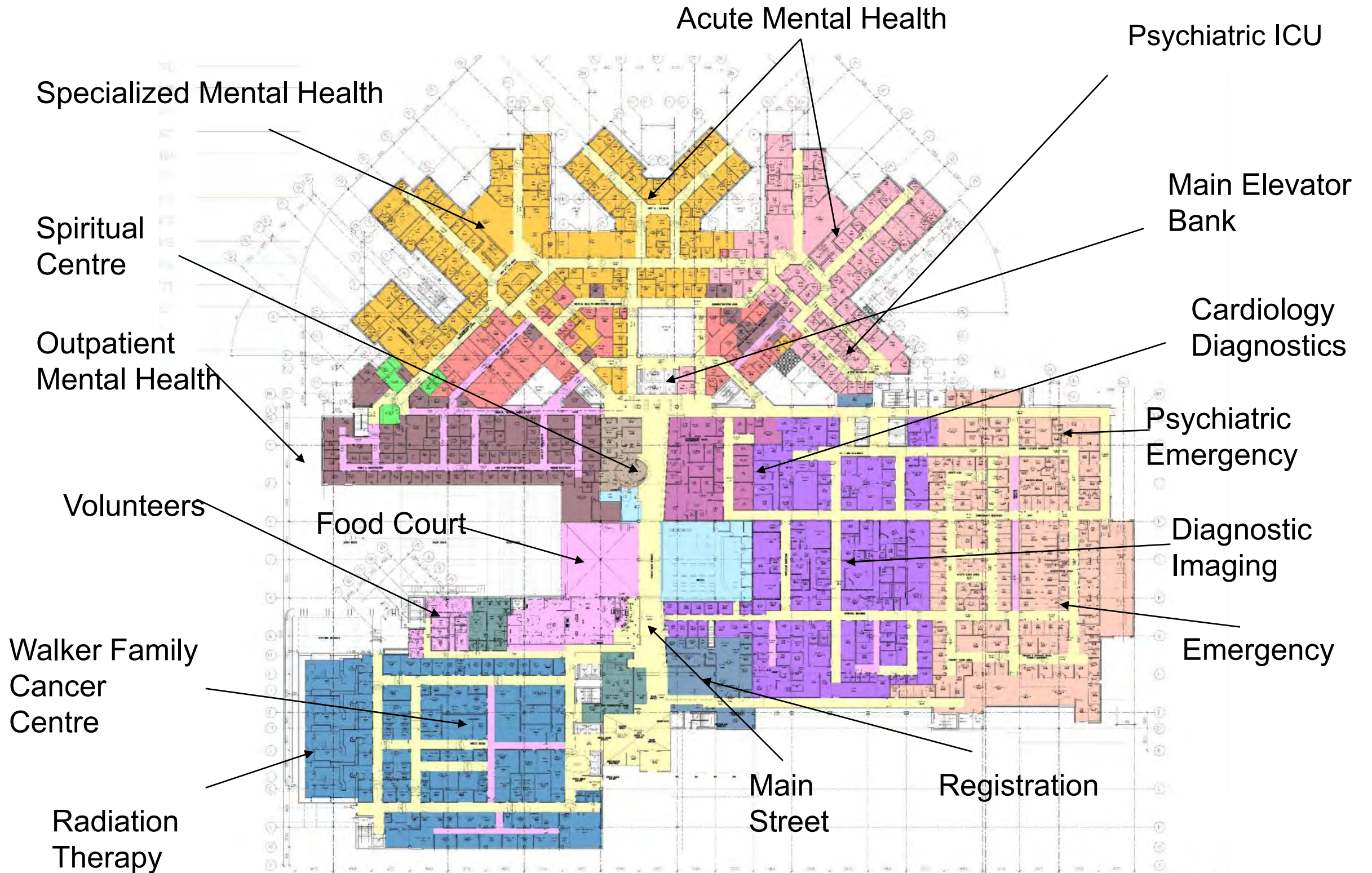
Morgue

Materials Management

Medical Device Reprocessing



# Level 1





**Main Street**









# Urgent Care & Emergency Triage



# Emergency Treatment Bay





# **Radiation Therapy Walker Family Cancer Centre**

# ATTENTION

SEPTEMBER 14<sup>TH</sup>, 2011 – ALL LEVELS  
MAG. WFCC & INPN BLDGS  
BE OFF LIMITS FROM 5 PM - 5 AM  
DUE TO X-RAY IMAGING

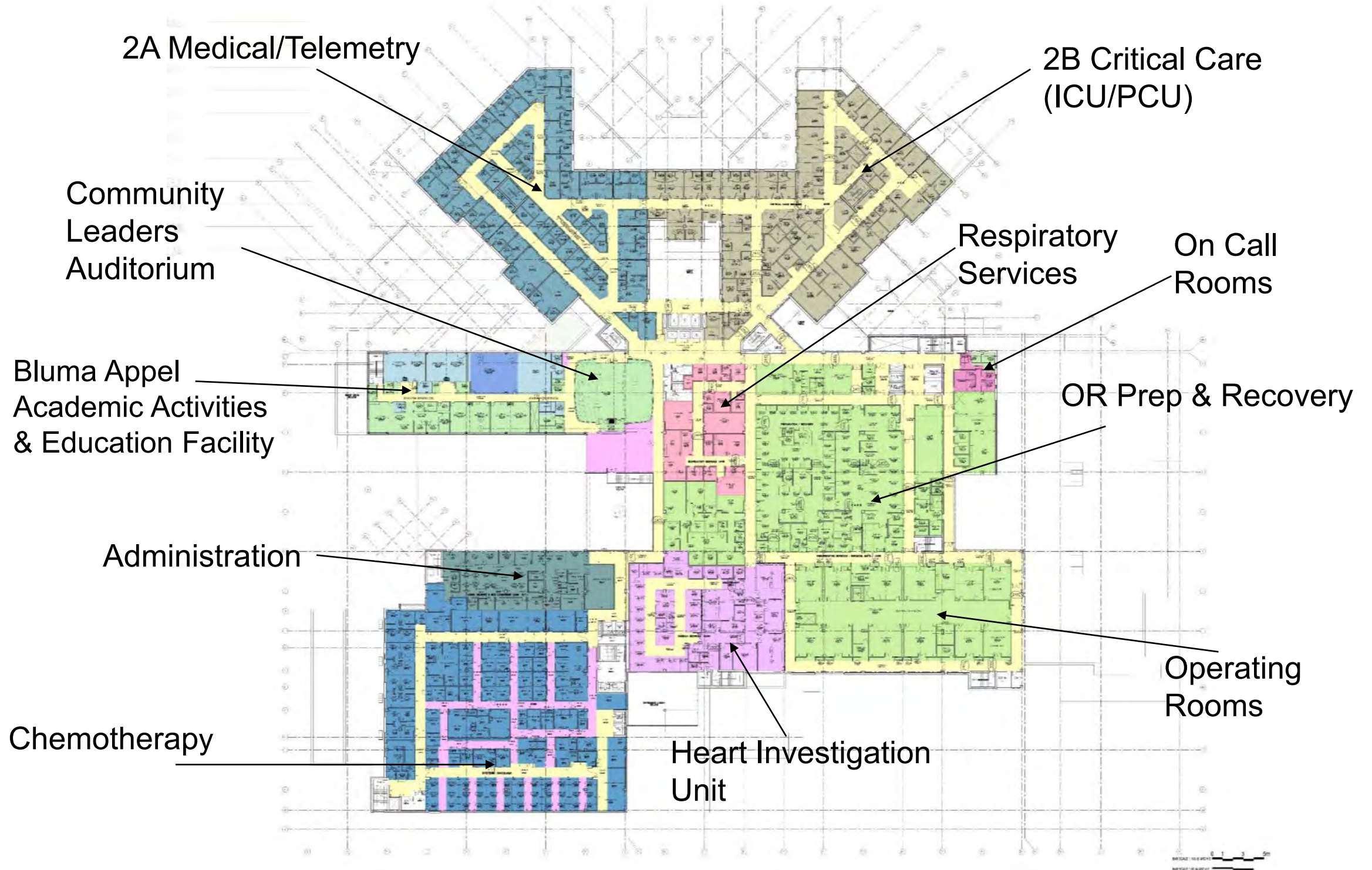
# Mental Health





# Food Court & Auditorium

# Level 2



# Integrated Operating Rooms







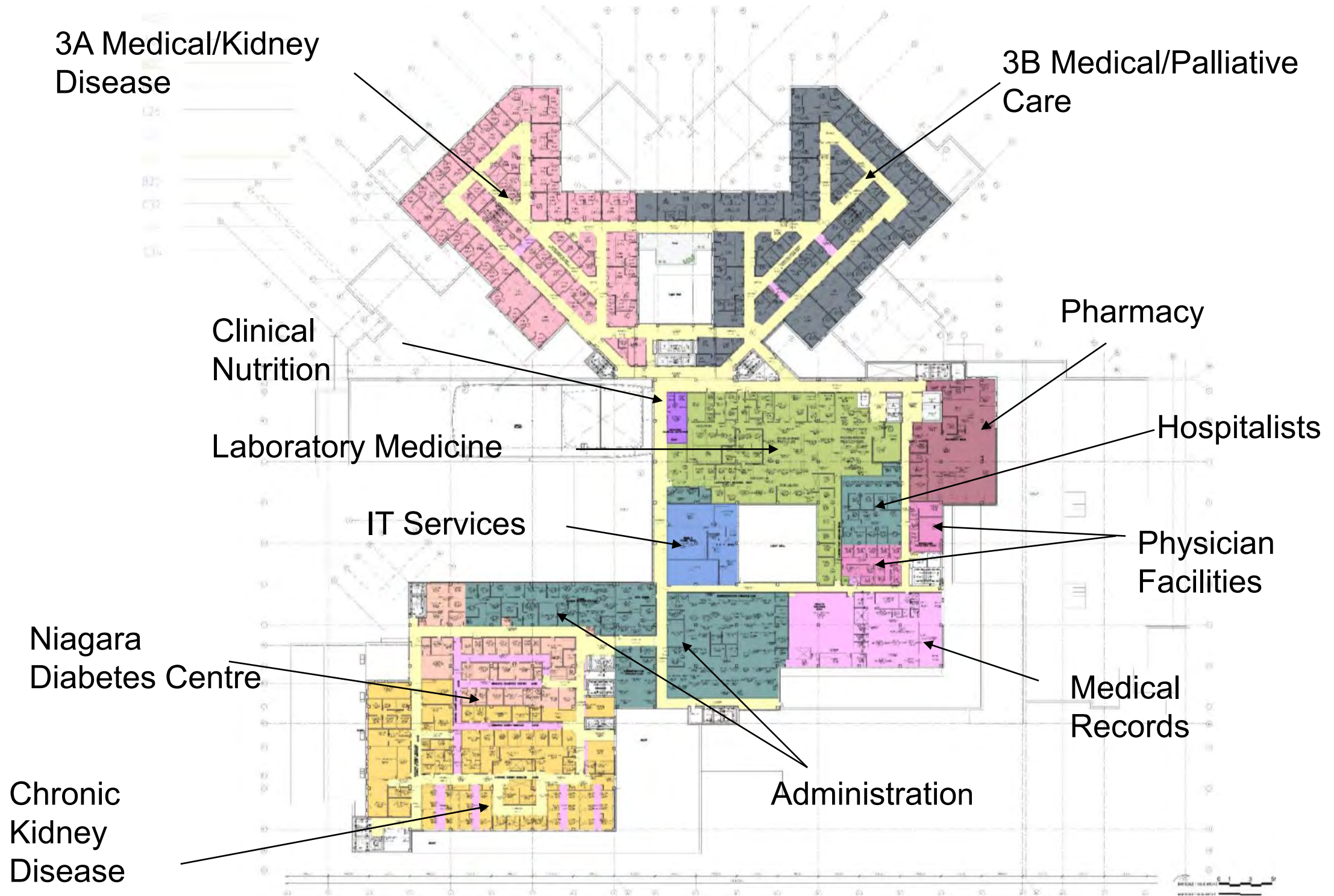
# Chemotherapy Infusion Bays

## Walker Family Cancer Centre

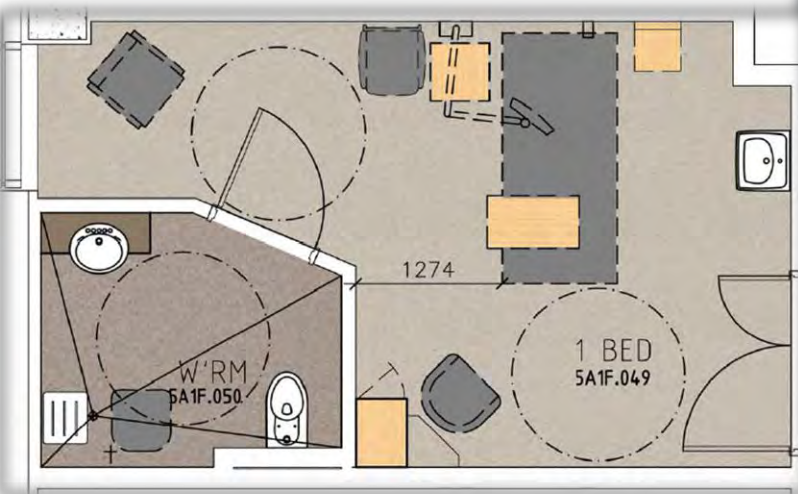
# Heart Investigation Unit



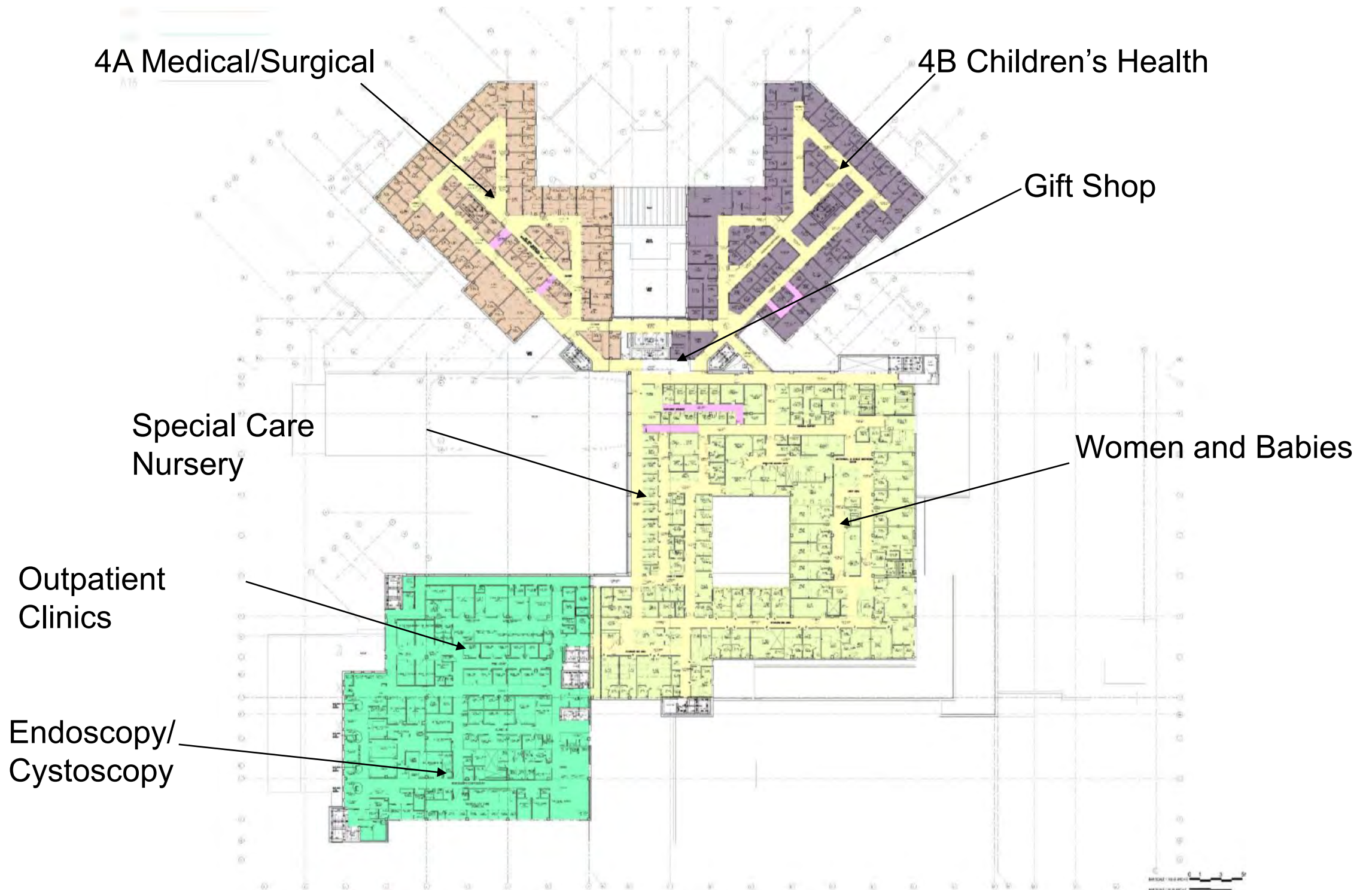
# Level 3



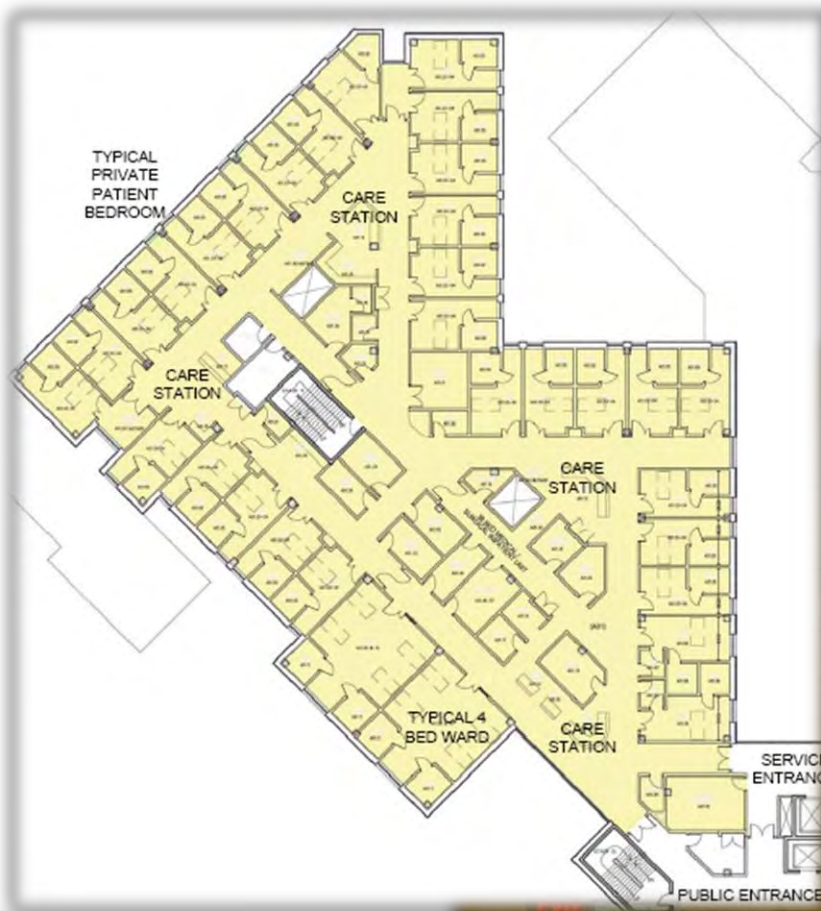
# 80% Private Rooms



# Level 4



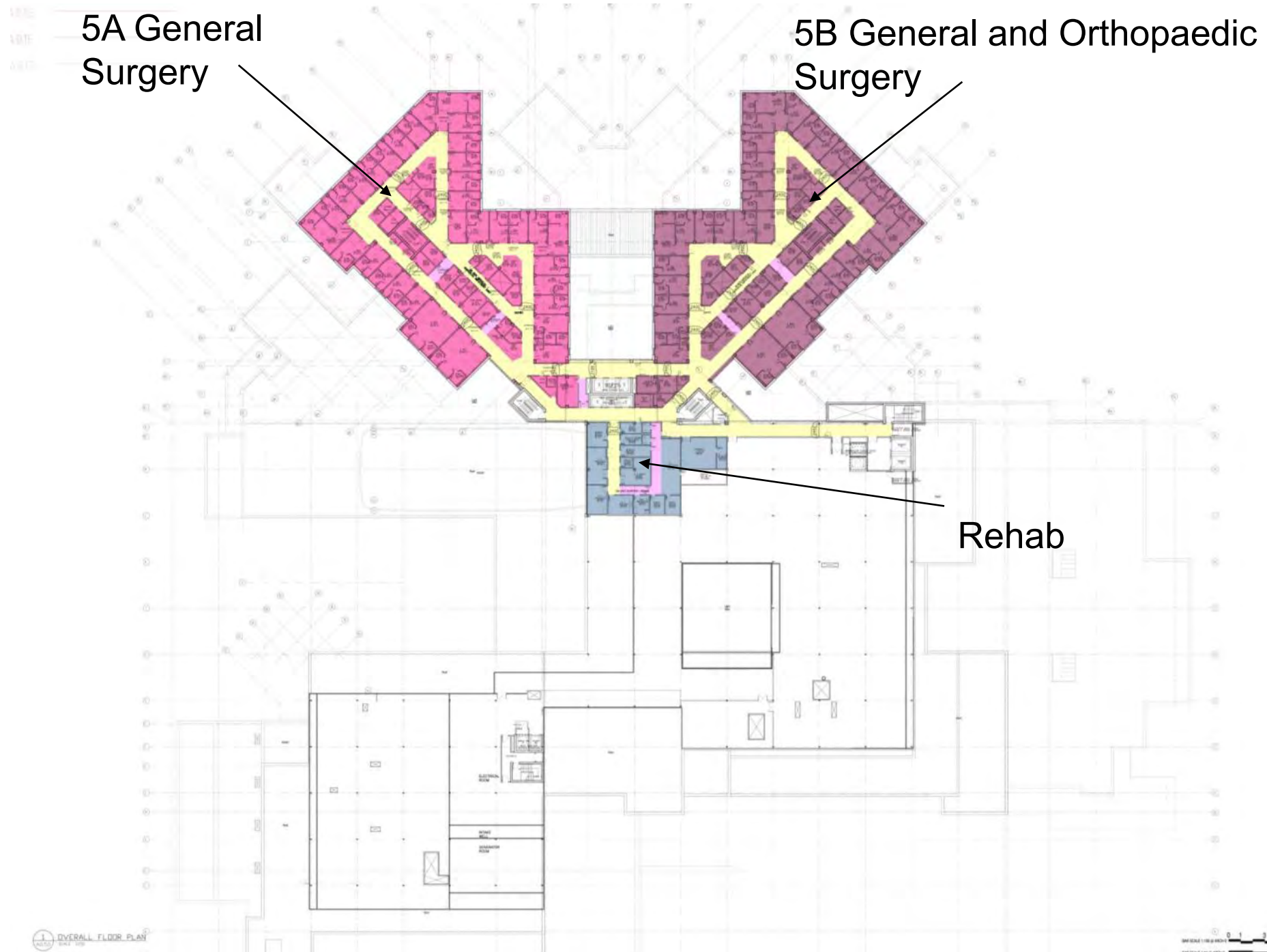
# Decentralized Care Stations





**Children's Health**

# Level 5







# The Move

**#1 Priority =  
*Patient Safety***





# Our New Hospital Timeline

*Preparing to provide a million square feet of care*

## Site Construction Milestones



## Hospital Operational Readiness Milestones

# Operational Readiness

- Thank you for input and expertise!!
- What is Operational Readiness?
- Operational Readiness Team
- Information & Updates on Operational Readiness
- Transition Planning HCR – gathering information

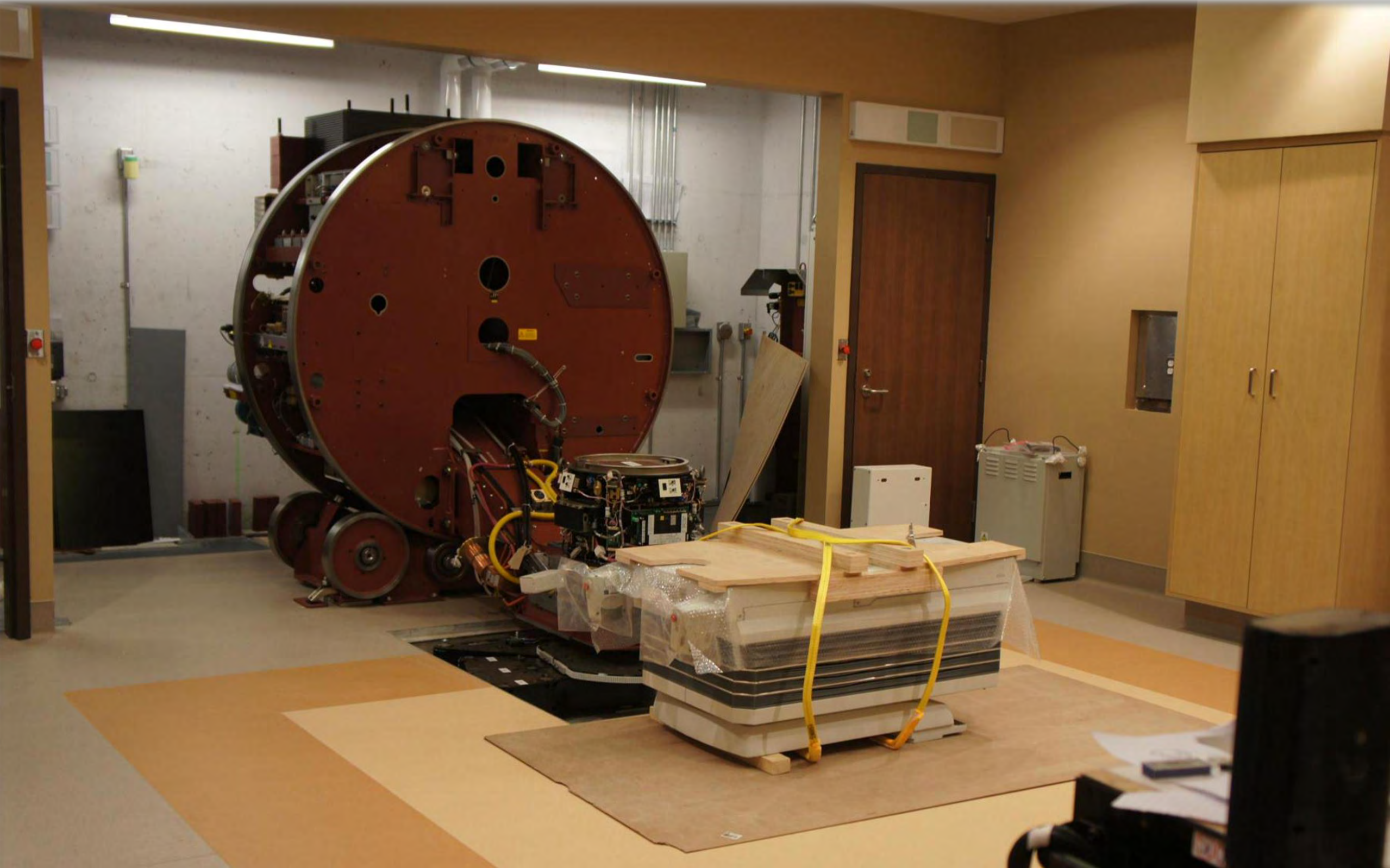
 ONE MILLION SQUARE FEET OF CARE

# What are we doing to get ready?

- ORBIT/PORT
- Corporate task force groups
- Integrated Planning Teams
- Stantec Meetings
- 2P Events
- Move coordination teams



**Over 25,000 pieces of equipment!**



# Visit our Mock-Up to see completed examples of rooms in the new hospital



**Intensive Care Unit**



**Typical One Bedroom Inpatient Unit**



**Exam/Consult Room**



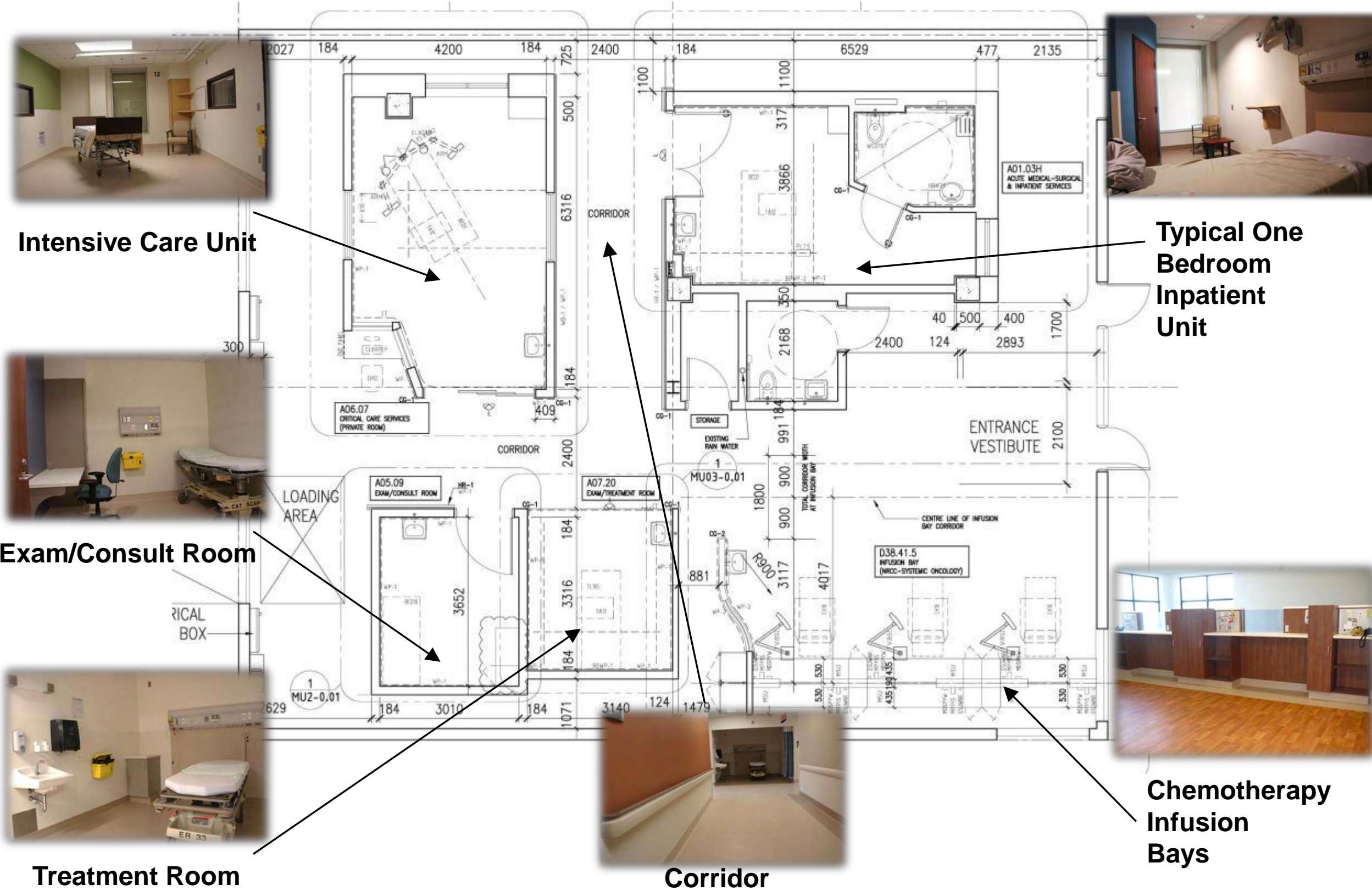
**Treatment Room**



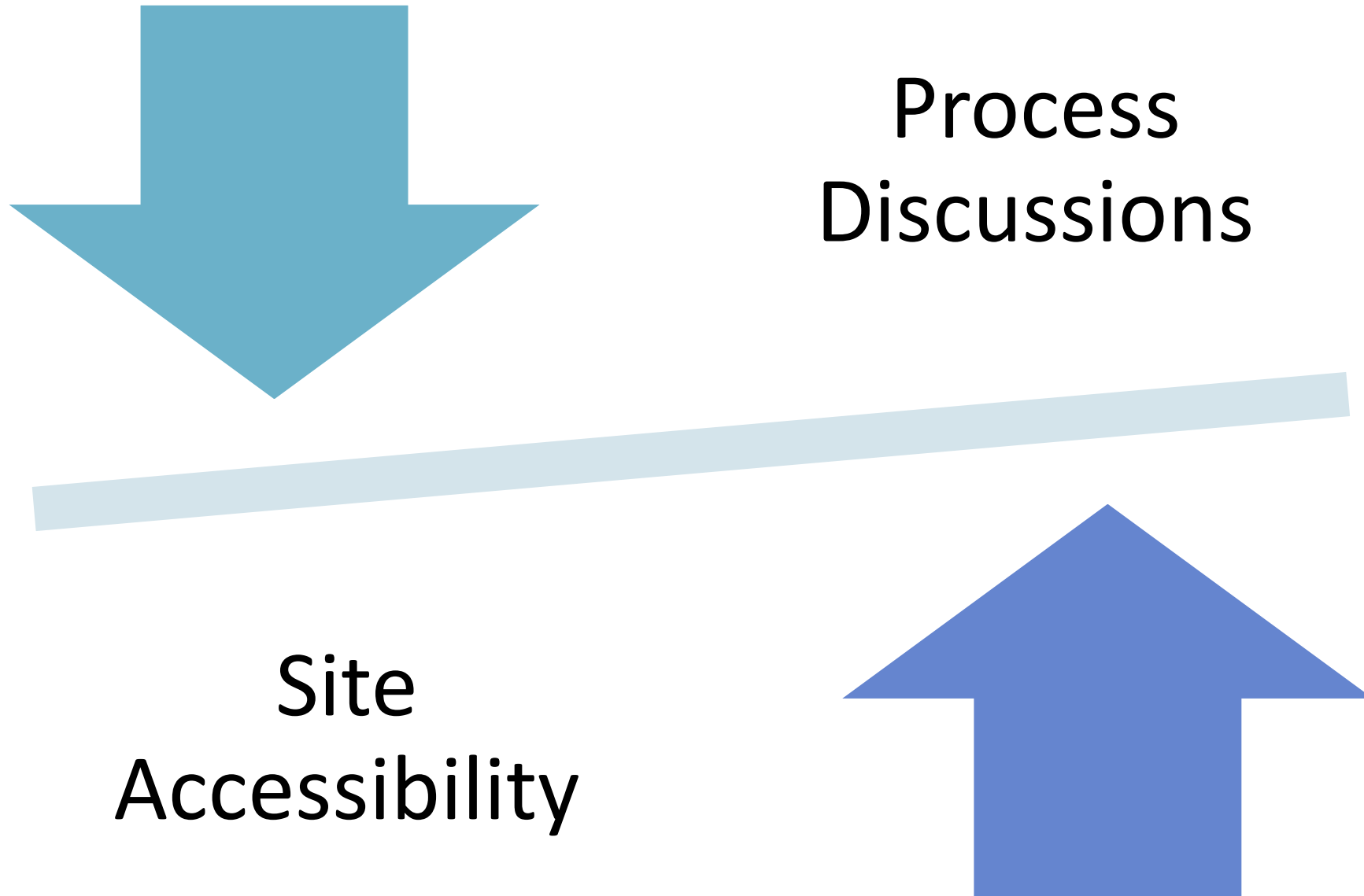
**Corridor**



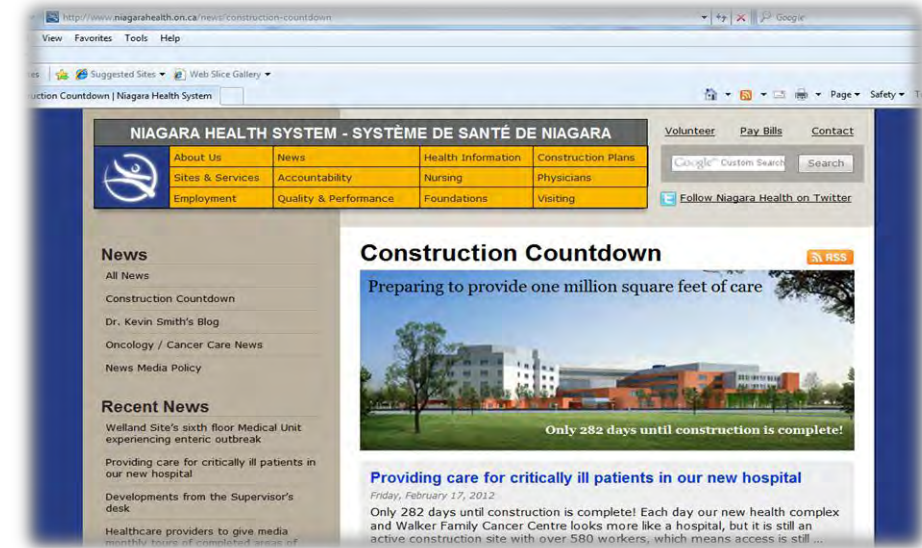
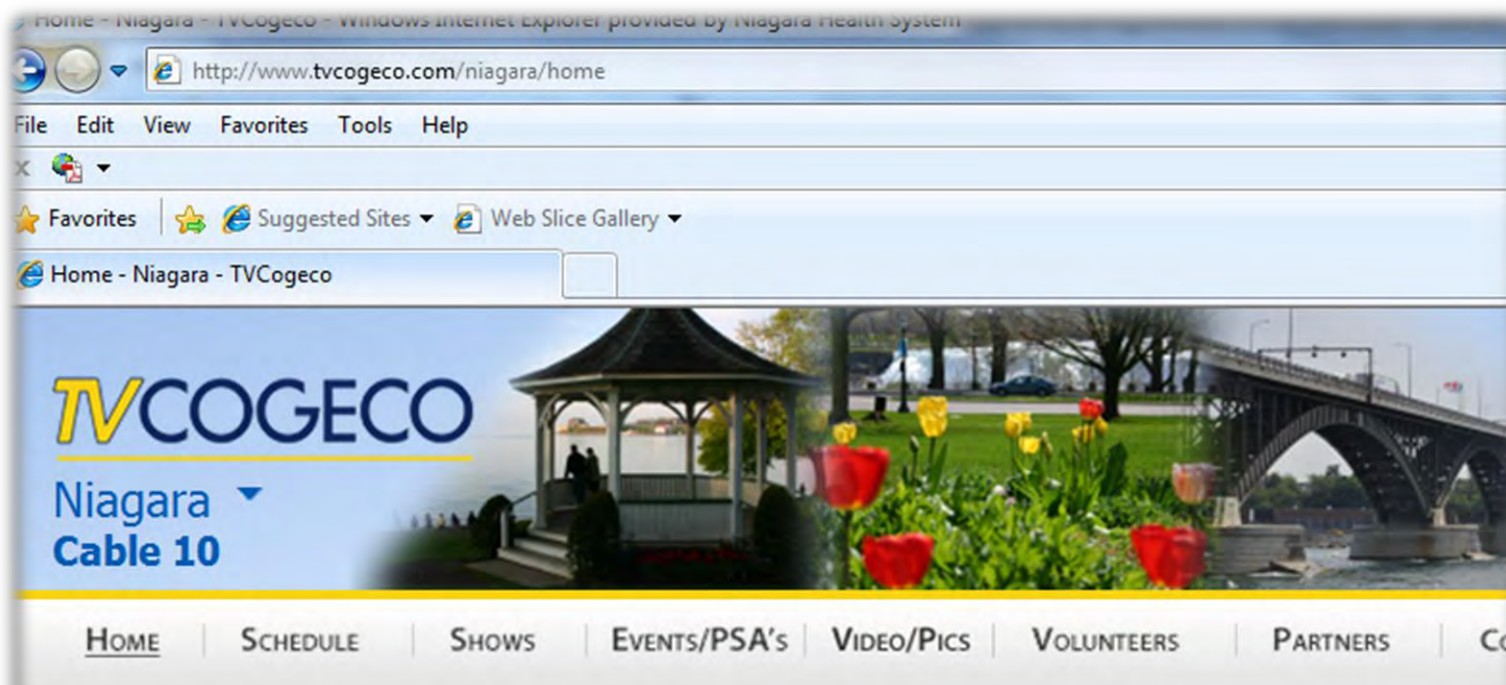
**Chemotherapy Infusion Bays**



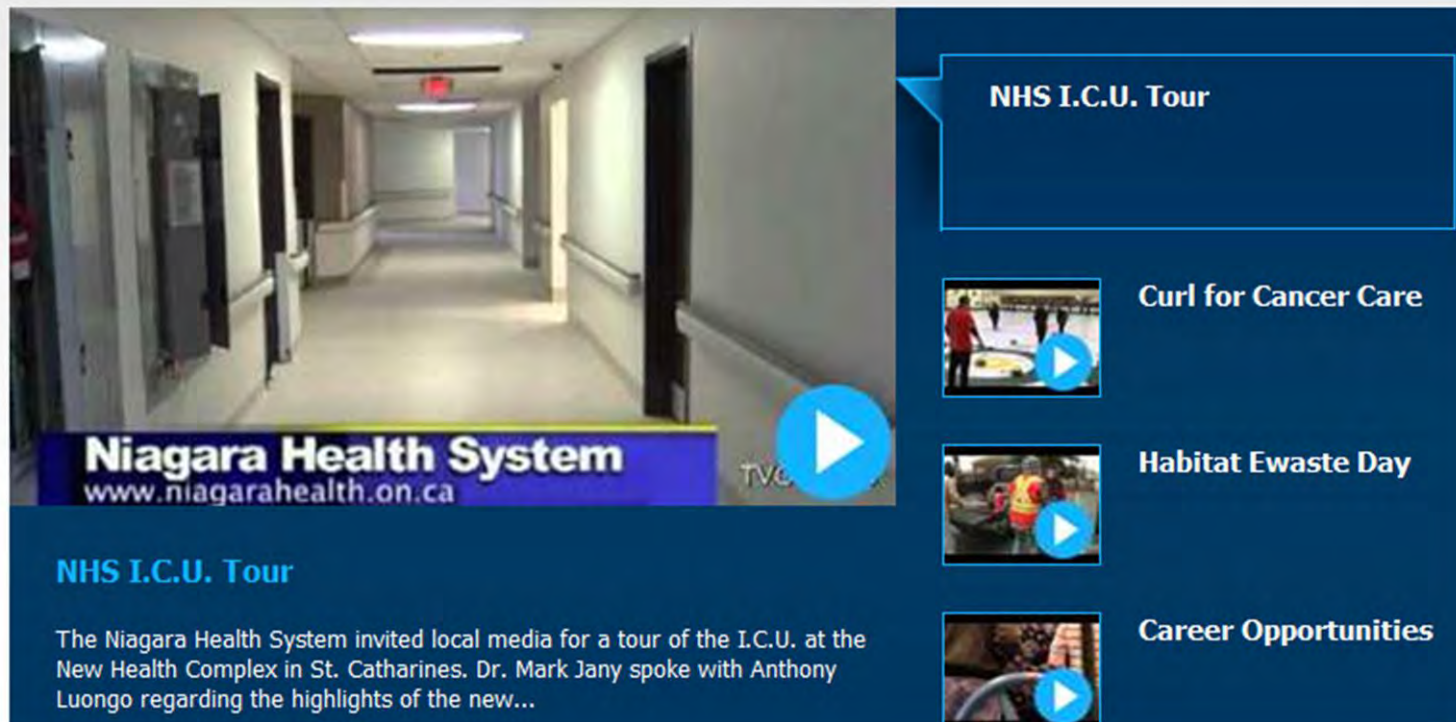
# As we look forward...



# For videos and more pictures:



[www.niagarahealth.on.ca](http://www.niagarahealth.on.ca)



[nhs.plenaryprojects.com](http://nhs.plenaryprojects.com)

[tvcogeco.com/niagara/home](http://tvcogeco.com/niagara/home)



# Town Hall Schedule

Date	Theme
Tues May 1, 2012	What will be different?
Thurs July 12, 2012	Who is Johnson Controls?
Thurs Sept. 6, 2012	Finding your way in the new hospital
Tues Nov. 6, 2012	Preparing to say hello and goodbye to our workspaces
Tues Dec. 4, 2012	What happens next?
Tues Jan 10, 2013	Countdown to opening
Tues. Feb 5, 2012	Countdown to opening
Tues March 5, 2013	Countdown to opening

**St. Catharines General Site Cafeteria Meeting Room  
2 – 4 p.m.**

# ONE MILLION SQUARE FEET OF CARE



*You can build a million square foot building...*

*Please make sure you can provide a million square feet of care*

*Patricia Xuereb*

